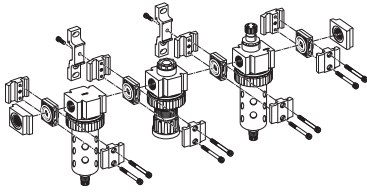


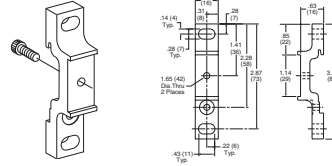
MODULAR ASSEMBLY & ACCESSORIES

05 ECONOMY



WALL MOUNTING KITS

PS955P



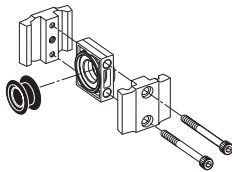
Wall Mounting Kits are available for mounting your Modular Assemblies and can be assembled and used with any standard body connector set.

Since Modular Combinations are always identical in size, you can predrill for wall mounting on your equipment.

Kit includes 1 assembly.

BODY CONNECTORS

PS954P



Body Connectors allow you to easily assemble and disassemble Modular Combinations.

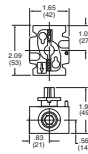
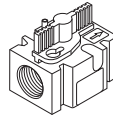
Body Connectors are required whenever you assemble two or more pieces together.

Each Kit includes one set.

LOCKOUT VALVE

PS95601P

1/4" Port

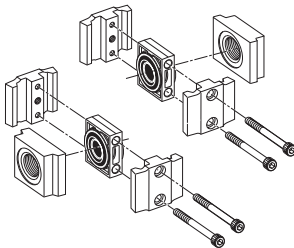


Lockout Valves provide positive shut-off and exhaust capability to isolate Modular units so they can be easily removed from the line and can be locked in a closed position. Center position can be used as a slow start for 06 & 07 series.

NOTE: Body Connectors are not supplied with Lockout Valves.

PORT BLOCK CONNECTOR KITS

	1/8"	1/4"	3/8"
NPT	PS95000P	PS95001P	PS95002P
BSPP	PS95010P	PS95011P	PS95012P
BSPT	PS95020P	PS95021P	PS95022P



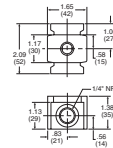
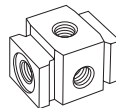
Port Block Connectors allow you to make threaded port connections to Modular units and are available in various port sizes to match your system requirements.

Each Kit includes all the necessary pieces to make two port connections.

MODULAR MANIFOLD BLOCK

PS95701P

1/4" Port



A Modular Manifold Block can be used between any two Modular units to give additional outlet ports. The 1/4" Manifold Block provides three additional outlets. Any standard pipe plug can be used to close off unused ports.

NOTE: Body Connectors are not supplied with Manifold Blocks.