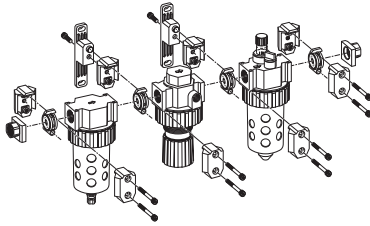


MODULAR ASSEMBLY & ACCESSORIES

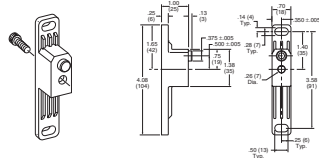
06 COMPACT - 07 STANDARD



WALL MOUNTING KITS

06 Series & 07 Series

PS755P



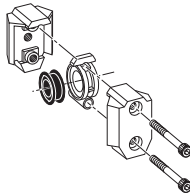
Wall Mounting Kits are available for mounting your Modular Assemblies and can be assembled and used with any standard body connector set.

Since Modular Combinations are always identical in size, you can predrill for wall mounting on your equipment.

Kit includes 1 assembly.

BODY CONNECTORS

06 Series PS754P
 07 Series PS854P



Body Connectors allow you to easily assemble and disassemble Modular Combinations.

Each Kit includes one set.

Body Connectors are required whenever you assemble two or more pieces together.

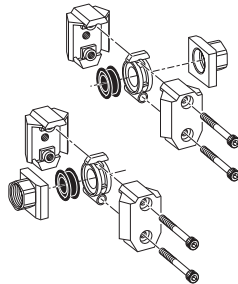
PORT BLOCK CONNECTOR KITS

Series	Size	NPT	BSPP	BSPT
06 Series	1/4"	PS750P	PS765P	PS761P
	3/8"	PS751P	PS766P	PS762P
	1/2"	PS752P*	PS767P	PS799P
07 Series	1/4"	PS850P	PS865P	PS861P
	3/8"	PS851P	PS866P	PS862P
	1/2"	PS852P	PS867P	PS863P
	3/4"	PS853P	PS860P	PS864P

* Use 1/4 or 3/8 ported bodies.

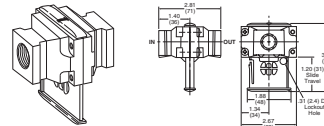
Port Block Connectors allow you to make threaded port connections to Modular units and are available in various port sizes to match your system requirements.

Each Kit includes all the necessary pieces to make two port connections.



LOCKOUT VALVES

06 Series PS756P 3/8" Port
 07 Series PS856P 1/2" Port

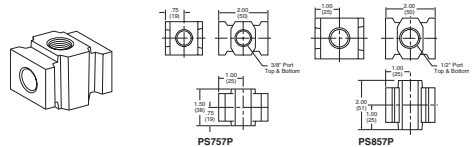


Lockout Valves provide positive shut-off and exhaust capability to isolate Modular units so they can be easily removed from the line and can be locked in a closed position. Center position can be used as a slow start.

NOTE: Body Connectors are not supplied with Lockout Valves.

MODULAR MANIFOLD BLOCK

06 Series PS757P 3/8" Port
 07 Series PS857P 1/2" Port



A Modular Manifold Block can be used between any two Modular units to give additional outlet ports. The Manifold Block provides 2 additional outlets in 3/8" and 1/2" sizes. Any standard pipe plug can be used to close off unused ports.

NOTE: Body Connectors are not supplied with Manifold Blocks.