

**Applications,
 temperature and
 pressure range:**

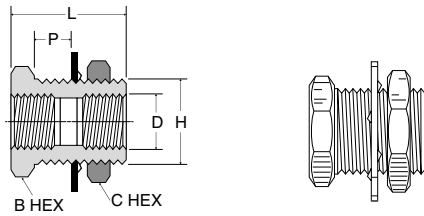
Use with brass, copper or iron pipe. Manufactured for low and medium pressure line connection work. Temperature and working pressure ranges from -65° to +250°F at 1000 PSI.

Features:

- All Parker hose barb fitting pipe threads are made to Dryseal standards.
- Connectors, unions, nuts and extruded elbows and tees are machined from CA 360 or CA 345 brass.
- Forged elbows and tees are machined from CA 377 brass.
- Meet functional requirements of SAE J530, SAE J531 and ASA.

ANCHOR COUPLING

SERIES 207ACBH

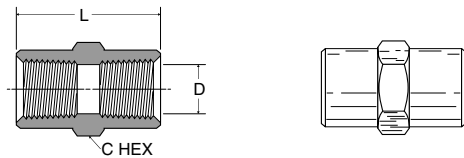


Part No.	Female Pipe Thread	Straight Thread	Max. Bulkhead P	B Hex	C Hex	L	Bulkhead Hole Dia. H	Flow Dia. D
207ACBH-2	1/8	5/8-18	.89	7/8	15/16	1.50	5/8	.339
207ACBH-4	1/4	3/4-16	.81	1	1-1/8	1.50	3/4	.441
207ACBHS-4	1/4	3/4-16	.26	1	1	.94	3/4	.441
207ACBH-6	3/8	1-14	.62	1-1/8	1-1/4	1.31	1	.571
207ACBH-8	1/2	1-1/8-14	.75	1-1/4	1-3/8	1.50	1-1/8	.703

10

COUPLING

SERIES 207P



Part No.	Pipe Thread	C Hex	L	Flow Dia. D
207P-2	1/8	9/16	.75	.339
207P-4	1/4	3/4	1.12	.441
207P-6	3/8	7/8	1.12	.571
207P-8	1/2	1-1/16	1.50	.703