

**General Description:** **Cylinder Accessories** – Parker offers a complete range of cylinder accessories to assure you of the greatest versatility in present and future cylinder applications.

**Rod End Accessories** – Accessories offered for the rod end of the cylinder include Rod Clevis, Eye Bracket, Knuckle, Clevis Bracket, and Pivot Pin. To select the proper part number for any desired accessory, refer to the table below or on the opposite page and look in the row to the right of the rod thread in the first column. For economical accessory selection, it is recommended that rod end style 4 be specified on your cylinder order.

**Accessory Load Capacity** – The various accessories have been load rated for your convenience. The load capacity in lbs. is the recommended maximum load for that accessory based on a 4:1 design factor in tension. (Pivot Pin is rated in shear). Before specifying, compare the actual load or the tension (pull) force at maximum operating pressure of the cylinder with the load capacity of the accessory you plan to use. If load or pull force of cylinder exceeds load capacity of accessory, consult factory.

**CYLINDER MOUNTINGS**

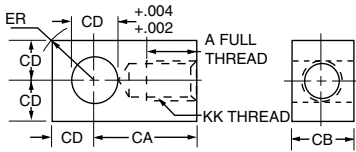
**KNUCKLE - CLEVIS BRACKET**

Thread Size	Knuckle		Clevis Bracket		Pivot Pin	
	Part No.	Load Capacity (Lbs.)	Part No.	Load Capacity (Lbs.)	Part No.	Shear Capacity (Lbs.)
7/16-20	0690890000	5000	0692050000	7300	0683680000	8600
1/2-20	0690900000	5700	0692050000	7300	0683680000	8600
3/4-16	0690910000	12100	0692060000	14000	0683690000	19300
3/4-16	0690910000	12100	0692060000	14000	0683690000	19300
7/8-14	0690920000	13000	0692070000	19200	0683700000	34300
1-14	0690930000	21700	0692070000	19200	0683700000	34300
1-14	0690930000	21700	0692070000	19200	0683700000	34300
1 1/4-12	0690940000	33500	0692080000	36900	0683710000	65000
1 1/4-12	0690940000	33500	0692080000	36900	0683710000	65000
1 1/2-12	0690950000	45000	0692090000	34000	0683720000	105200
1 3/4-12	0690960000	53500	0692100000	33000	0692150000	137400
1 7/8-12	0690970000	75000	0692100000	33000	0692150000	137400
2 1/4-12	0690980000	98700	0692110000	34900	0683740000	214700

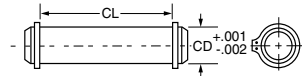
**CYLINDER MOUNTINGS**

**NUCKLE**

**Dimensions**



**Pivot Pin Dimensions**



Part No.	A	CA	CB	CD	ER	KK
0690890000	3/4	1 1/2	3/4	1/2	23/32	7/16-20
0690900000	3/4	1 1/2	3/4	1/2	23/32	1/2-20
0690910000	1 1/8	2 1/16	1 1/4	3/4	1 1/16	3/4-16
0690920000	1 1/8	2 3/8	1 1/2	1	1 7/16	7/8-14
0690930000	1 5/8	2 13/16	1 1/2	1	1 7/16	1-14
0690940000	2	3 7/16	2	1 3/8	1 31/32	1 1/4-12
0690950000	2 1/4	4	2 1/2	1 3/4	2 1/2	1 1/2-12
0690960000	2 1/4	4 3/8	2 1/2	2	2 27/32	1 3/4-12
0690970000	3	5	2 1/2	2	2 27/32	1 7/8-12
0690980000	3 1/2	5 13/16	3	2 1/2	3 9/16	2 1/4-12

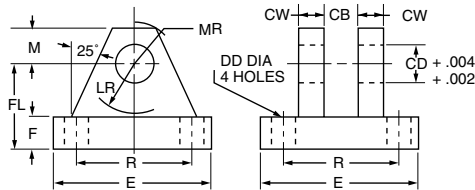
Part No.	CD	CL
0683680000	1/2	1 7/8
0683690000	3/4	2 5/8
0683700000	1	3 1/8
0683710000	1 3/8	4 1/8
0683720000	1 3/4	5 3/16
0692150000	2	5 11/16
0683740000	2 1/2	6 3/16

1. Pivot Pins are furnished with Clevis Mounted Cylinders as standard.
2. Pivot Pins are furnished with (2) Retainer Rings.
3. Pivot Pins must be ordered as a separate item if to be used with Knuckles, Rod Clevises, or Clevis Brackets.

**CYLINDER MOUNTINGS**

**CLEVIS BRACKET**

**Dimensions**



Part No.	CB	CD	CW	DD	E	F	FL	LR	M	MR	R
0740760000	15/32	7/16	3/8	17/64	2 1/4	3/8	1	5/8	3/8	1/2	1.75
0692050000	3/4	1/2	1/2	13/32	3 1/2	1/2	1 1/2	3/4	1/2	5/8	2.55
0692060000	1 1/4	3/4	5/8	17/32	5	5/8	1 7/8	1 3/16	3/4	29/32	3.82
0692070000	1 1/2	1	3/4	21/32	6 1/2	3/4	2 1/4	1 1/2	1	1 1/4	4.95
0692080000	2	1 3/8	1	21/32	7 1/2	7/8	3	2	1 3/8	1 21/32	5.73
0692090000	2 1/2	1 3/4	1 1/4	29/32	9 1/2	7/8	3 5/8	2 3/4	1 3/4	2 7/32	7.50
0692100000	2 1/2	2	1 1/2	1 1/16	12 3/4	1	4 1/4	3 3/16	2 1/4	2 25/32	9.40
0692110000	3	2 1/2	1 1/2	1 3/16	12 3/4	1	4 1/2	3 1/2	2 1/2	3 1/8	9.40

Cylinder accessory dimensions conform to NFPA recommended standard NFPT/T3.6.8 R1-1984, NFPA recommended standard fluid power systems – cylinder – dimensions for accessories for cataloged square head industrial cylinders.