

General Description: **Cylinder Accessories** – Parker offers a complete range of cylinder accessories to assure you of the greatest versatility in present and future cylinder applications.

Rod End Accessories – Accessories offered for the rod end of the cylinder include Rod Clevis, Eye Bracket, Knuckle, Clevis Bracket, and Pivot Pin. To select the proper part number for any desired accessory, refer to the table below or on the opposite page and look in the row to the right of the rod thread in the first column. For economical accessory selection, it is recommended that rod end style 4 be specified on your cylinder order.

Accessory Load Capacity – The various accessories have been load rated for your convenience. The load capacity in lbs. is the recommended maximum load for that accessory based on a 4:1 design factor in tension. (Pivot Pin is rated in shear). Before specifying, compare the actual load or the tension (pull) force at maximum operating pressure of the cylinder with the load capacity of the accessory you plan to use. If load or pull force of cylinder exceeds load capacity of accessory, consult factory.

CYLINDER MOUNTINGS

ROD CLEVIS - MOUNTING PLATE/EYE BRACKET

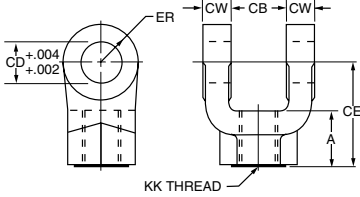
Thread Size	Rod Clevis		Mounting Plate/Eye Bracket		Pivot Pin	
	Part No.	Load Capacity (Lbs.)	Part No.	Load Capacity (Lbs.)	Part No.	Shear Capacity (Lbs.)
7/16-20	0509400000	4250	0691950000	4100	0683680000	8600
1/2-20	0509410000	4900	0691950000	4100	0683680000	8600
3/4-16	0509420000	11200	0691960000	10500	0683690000	19300
3/4-16	1332840000	11200	0691960000	10500	0683690000	19300
7/8-14	0509430000	18800	*0853610000	20400	0683700000	34300
1-14	0509440000	19500	*0853610000	20400	0683700000	34300
1-14	1332850000	19500	*0853610000	20400	0683700000	34300
1 1/4-12	0509450000	33500	0691980000	21200	0683710000	65000
1 1/4-12	1332860000	33500	0691980000	21200	0683710000	65000
1 1/2-12	0509460000	45600	*0853620000	49480	0683720000	105200
1 3/4-12	0509470000	65600	*0853630000	70000	0683730000	137400
1 7/8-12	0509480000	65600	*0853630000	70000	0683730000	137400
2 1/4-12	0509490000	98200	*0853640000	94200	0683740000	214700

* Cylinder accessory dimensions conform to NFPA recommended standard NFPA/T3.6.8 R1-1984, NFPA recommended standard fluid power systems – cylinder – dimensions for accessories for cataloged square head industrial cylinders.

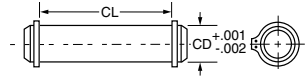
CYLINDER MOUNTINGS

ROD CLEVIS

Dimensions



Pivot Pin Dimensions



Part No.	A	CB	CD	CE	CW	ER	KK
0509400000	3/4	3/4	1/2	1 1/2	1/2	1/2	7/16-20
0509410000	3/4	3/4	1/2	1 1/2	1/2	1/2	1/2-20
0509420000	1 1/8	1 1/4	3/4	2 1/8	5/8	3/4	3/4-16
1332840000	1 1/8	1 1/4	3/4	2 3/8	5/8	3/4	3/4-16
0509430000	1 5/8	1 1/2	1	2 15/16	3/4	1	7/8-14
0509440000	1 5/8	1 1/2	1	2 15/16	3/4	1	1-14
1332850000	1 5/8	1 1/2	1	3 1/8	3/4	1	1-14
0509450000	1 7/8	2	1 3/8	3 3/4	1	1 3/8	1 1/4-12
1332860000	2	2	1 3/8	4 1/8	1	1 3/8	1 1/4-12
0509460000	2 1/4	2 1/2	1 3/4	4 1/2	1 1/4	1 3/4	1 1/2-12
0509470000	3	2 1/2	2	5 1/2	1 1/4	2	1 3/4-12
0509480000	3	2 1/2	2	5 1/2	1 1/4	2	1 7/8-12
0509490000	3 1/2	3	2 1/2	6 1/2	1 1/2	2 1/2	2 1/4-12

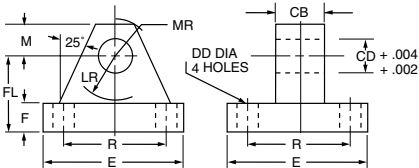
Part Number	CD	CL
0683680000	1/2	1 7/8
0683690000	3/4	2 5/8
0683700000	1	3 1/8
0683710000	1 3/8	4 1/8
0683720000	1 3/4	5 3/16
0683730000	2	5 3/16
0683740000	2 1/2	6 3/16

1. Pivot Pins are furnished with Clevis Mounted Cylinders as standard.
2. Pivot Pins are furnished with (2) Retainer Rings.
3. Pivot Pins must be ordered as a separate item if to be used with Knuckles, Rod Clevises, or Clevis Brackets.

6

CYLINDER MOUNTINGS

MOUNTING PLATE/EYE BRACKET



1. When used to mate with the Rod Clevis, select Eye Bracket by thread size in table on opposite page.
2. When used to mount the Style BB Cylinders, select Mounting Plate by bore size below.

Part No.	CB	CD	DD	E	F	FL	LR	M	MR	R	2A/3L Bore	2H Bore
0691950000	3/4	1/2	13/32	2 1/2	3/8	1 1/8	3/4	1/2	9/16	1.63	1 1/2", 2", 2 1/2"	1 1/2"
0691960000	1 1/4	3/4	17/32	3 1/2	5/8	1 7/8	1 1/4	3/4	7/8	2.55	3 1/4", 4"	2", 2 1/2"
*0853610000	1 1/2	1	21/32	4 1/2	7/8	2 3/8	1 1/2	1	1 1/4	3.25	-	3 1/4"
0691980000	2	1 3/8	21/32	5	7/8	3	2 1/8	1 3/8	1 5/8	3.82	-	4"
*0853620000	2 1/2	1 3/4	29/32	6 1/2	1 1/8	3 3/8	2 1/4	1 3/4	2 1/8	4.95	-	-
*0853630000	2 1/2	2	1 1/16	7 1/2	1 1/2	4	2 1/2	2	2 7/16	5.73	-	-
*0853640000	3	2 1/2	1 3/16	8 1/2	1 3/4	4 3/4	3	2 1/2	3	6.58	-	-

* Cylinder accessory dimensions conform to NFPA recommended standard NFPA/T3.6.8 R1-1984, NFPA recommended standard fluid power systems
 - cylinder - dimensions for accessories for cataloged square head industrial cylinders.