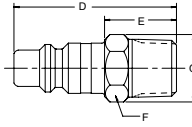


**INDUSTRIAL INTERCHANGE NIPPLES**

**MALE PIPE THREAD**

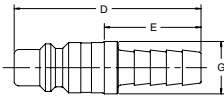


Body Size (in.)	Part No. Brass	Part No. Steel	Thread Size NPTF	Overall Length (in.) D	Exposed Length* (in.) E	Hex Size (in.) F	Largest Diameter (in.) G	Wt. (LB.) P/Piece
1/4	-	H0C	1/8-27	1.56	0.80	0.50	0.58	0.05
1/4	BH2C	H2C	1/4-18	1.66	0.89	0.56	0.65	0.06
1/4	-	H2C-E	3/8-18	1.81	1.05	0.69	0.80	0.07
3/8	-	H0E	1/4-18	1.88	0.93	0.62	0.72	0.08
3/8	BH2E	H2E	3/8-18	1.91	0.96	0.69	0.80	0.09
3/8	-	H2E-F	1/2-14	2.12	1.18	0.88	1.02	0.15
1/2	-	H0F	3/8-18	2.31	1.07	0.69	0.79	0.16
1/2	BH2F	H2F	1/2-14	2.48	1.22	0.88	1.01	0.18
1/2	-	H2F-G	3/4-14	2.53	1.29	1.13	1.30	0.24

\*This dimension represents portion of nipple that is exposed when nipple is inserted in a Parker 20 Series coupler.

**INDUSTRIAL INTERCHANGE NIPPLES**

**STANDARD HOSE BARB**



Body Size (in.)	Part No. Steel	Hose I.D.	Overall Length (in.) D	Exposed Length* (in.) E	Largest Diameter (in.) G	Wt. (LB.) P/Piece
1/4	H8C	1/4	1.72	0.95	0.46	0.04
1/4	H8C-D	5/16	2.09	1.33	0.55	0.04
1/4	H9C	3/8	2.09	1.33	0.55	0.05
3/8	H5E	3/8	1.85	0.90	0.59	0.07
3/8	H6E	1/2	2.19	1.24	0.68	0.08
1/2	H4F	3/8	2.53	1.29	0.68	0.10
1/2	H5F	1/2	2.53	1.29	0.68	0.11
1/2	H5F-G	3/4	3.06	1.82	0.93	0.18

\*This dimension represents portion of nipple that is exposed when nipple is inserted in a Parker 20 Series coupler.