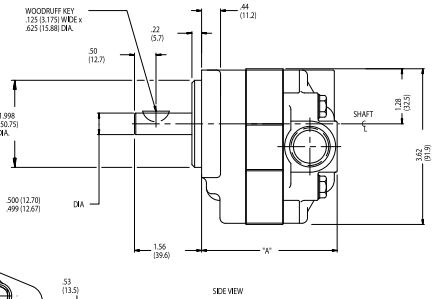
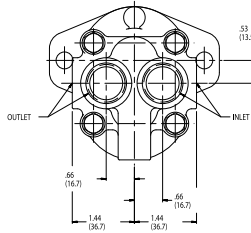
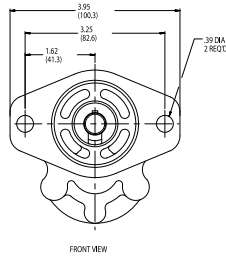


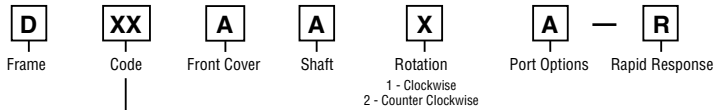
**General Description:** Displacement: See Code  
 Mounting Flange: SAE 'AA' 2-Bolt  
 Ports: SAE O-Ring – Side  
 Shaft: 1/2" Keyed Shaft  
 Seal Material: Nitrile  
 Rotation: Clockwise or Counter Clockwise

**GEAR PUMPS**

**D RAPID RESPONSE**



**Model Code**



Code	CC	CIR	Inlet Port	Outlet Port	Dim A	Dim B	Order Number	
							Clockwise	Counter Clockwise
05	1.87	0.114	SAE-10	SAE - 8	2.48	N/A	D05AA2A-R	D05AA1A-R
07	2.76	0.168	SAE-10	SAE - 8	2.57	N/A	D07AA2A-R	D07AA1A-R
09	3.45	0.210	SAE-10	SAE - 8	2.64	N/A	D09AA2A-R	D09AA1A-R
11	4.29	0.262	SAE-10	SAE - 8	2.72	N/A	D11AA2A-R	D11AA1A-R
14	5.38	0.329	SAE-10	SAE - 8	2.83	N/A	D14AA2A-R	D14AA1A-R
17	6.62	0.404	SAE-10	SAE - 8	2.96	N/A	D17AA2A-R	D17AA1A-R
22	8.55	0.522	SAE-10	SAE - 8	3.15	N/A	D22AA2A-R	D22AA1A-R

