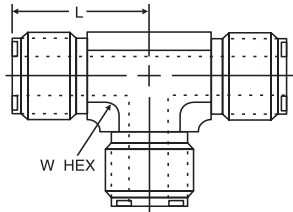


**UltraSeal™ UNION TEE**

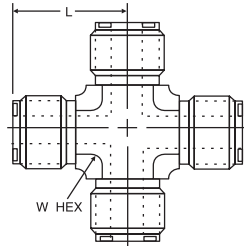
**SERIES JQ**



Part No.	W Hex (in.)	L (in.)
4-4-4 JQ	9/16	.84
6-6-6 JQ	3/4	.97
8-8-8 JQ	7/8	1.03
12-12-12 JQ	1-5/16	1.31

**UltraSeal™ UNION CROSS**

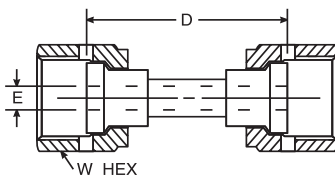
**SERIES KQ**



Part No.	W Hex (in.)	L (in.)
4 KQ	9/16	.84
6 KQ	3/4	.97
8KQ	7/8	1.03

**UltraSeal™ GLAND UNION (WELDED)**

**SERIES Q1HBQ1**

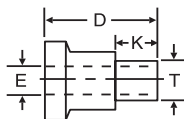


Part No.	W Hex (in.)	D (in.)	*E Bore (in.)
4-4 Q1HBQ1	11/16	1.33	.18
6-6 Q1HBQ1	7/8	1.25	.25
8-8 Q1HBQ1	1	1.25	.31

\* Note: Machined Bore diameters to match machined Bore in body.

**UltraSeal™ GLAND TO MINIBUTTWELD**

**SERIES Q1M**



Part No.	D (in.)	*E Bore (in.)	T (in.)	K (in.)	Working Pressure
4-4 Q1M	.60	.18	.25	.25	5,400
6-6 Q1M	.62	.25	.38	.25	4,300
8-8 Q1M	.62	.31	.50	.25	3,600

\* Note: Machined Bore diameters to match machined Bore in body.