

**General Description:** The Parker P1A series of pneumatic cylinders are intended for use in a wide range of applications. These cylinders are particularly suitable for lighter duties in the packaging, food and textile industries. Hygienic design, the use of corrosion-resistant materials and initial lubrication with our food-grade grease makes the cylinders suitable for food industry applications.

Proven design and high quality manufacturing throughout ensure long service life and optimum performance.

Mounting dimensions are in accordance with ISO 6432 and CETOP RP52P. This greatly simplifies installation and world-wide interchangeability.

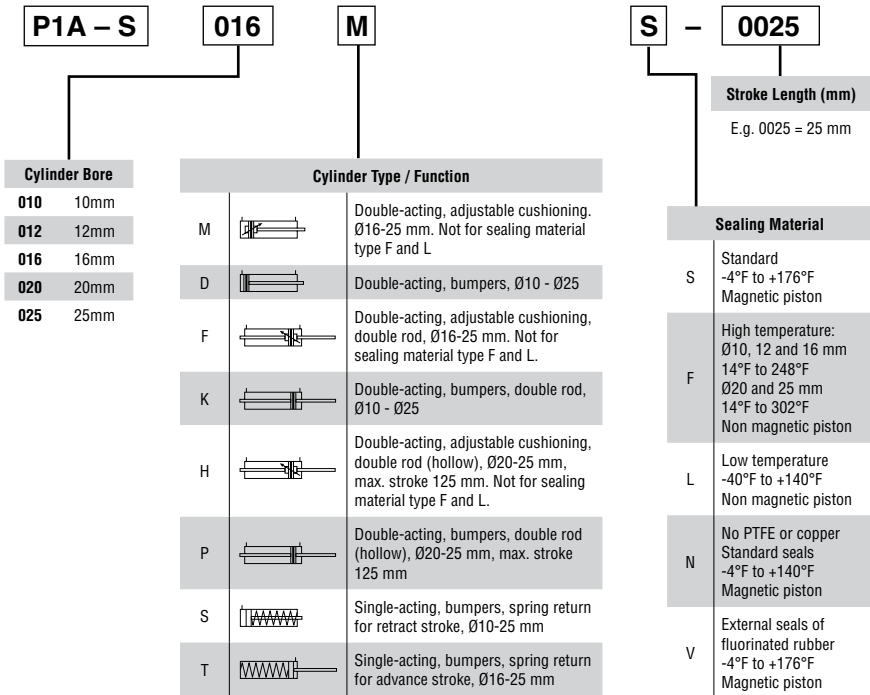
The Mini ISO range is available with bumpers or adjustable pneumatic cushioning. Controlled by simple bleed screws for fine adjustment, the adjustable cushioned cylinders can be operated with higher mass loads and at higher speeds than those with fixed end cushioning bumpers.

The Mini ISO range is also available in an all-stainless version with piston rod, cylinder body and end covers of stainless steel for use in extremely severe environments. Consult the Actuator Division for more information.

A complete range of sensors for proximity sensing is available as accessories: both reed and solid state sensors are available. Either can be supplied with flying leads or cable and multi-pin connector.

**MINI ISO PNEUMATIC CYLINDERS**

**P1A SERIES - HOW TO ORDER**



**MINI ISO PNEUMATIC CYLINDERS**

**P1A SERIES - STROKE LENGTHS**

Cylinder Model	Bore Size	Stroke Length (+ = standard, - = non-standard, blank = N/A)														
		10	15	20	25*	30	40	50*	80*	100*	125*	160*	200*	250*	320*	400*
<b>Double Acting with fixed end-cushioning:</b>																
P1A-S 010 D	10	+	+	+	+	+	+	+	+	+	+	-	-	-	-	-
P1A-S 012 D	12	+	+	+	+	+	+	+	+	+	+	+	+	-	-	-
P1A-S 016 D	16	+	+	+	+	+	+	+	+	+	+	+	+	-	-	-
P1A-S 020 D	20	+	+	+	+	+	+	+	+	+	+	+	+	+	+	-
P1A-S 025 D	25	+	+	+	+	+	+	+	+	+	+	+	+	+	+	-
<b>Double Acting with adjustable end-cushioning:</b>																
P1A-S 016 M	16				+	+	+	+	+	+	+	+	+	+	+	+
P1A-S 020 M	20				+	+	+	+	+	+	+	+	+	+	+	+
P1A-S 025 M	25				+	+	+	+	+	+	+	+	+	+	+	+
<b>Single Acting:</b>																
P1A-S 010 SS	10	+	+	-	+	-	+	+	+							
P1A-S 012 SS	12	+	+	-	+	-	+	+	+							
P1A-S 016 SS(TS)	16	+	+	-	+	-	+	+	+	+						
P1A-S 020 SS(TS)	20	+	+	-	+	-	+	+	+							
P1A-S 025 SS(TS)	25	+	+	-	+	-	+	+	+							

\*Standard stroke lengths in mm according to ISO 4393

\*\* Not for the TS version

Note: For sensor specifications and part numbers, please refer to the Electronic Sensors section.

**MINI ISO PNEUMATIC CYLINDERS**

**P1A SERIES - STANDARD SPECIFICATIONS**

Working Pressure	max	145 PSI
Working Temperature	max	176°F
	min	4°F
High-Temperature Version	max	Ø20 and 25 mm - 302°F Ø10, 12 and 16 mm - 248°F
	min	14°F
Low-Temperature Version	max	140°F
	min	-40°F

Prelubricated, further lubrication is not normally necessary.

If additional lubrication is introduced it must be continued.

## MINI ISO PNEUMATIC CYLINDERS

### P1A SERIES - MATERIAL SPECIFICATION

<b>Piston rod:</b>	Stainless steel, DIN X 10 CrNiS 18 9
<b>Piston rod seal:</b>	Fluorocarbon rubber FPM
<b>Piston rod bearing:</b>	Multilayer PTFE/steel
<b>End covers:</b>	Anodized aluminium
<b>O-ring, internal:</b>	Nitrile rubber, NBR
<b>Cylinder barrel:</b>	Stainless steel, DIN X 5 CrNi 18 10
<b>Piston, complete:</b>	Nitrile rubber, NBR/steel
<b>Magnet holder:</b>	Thermoplastic elastomer
<b>Magnet:</b>	Plastic-coated magnetic material
<b>Return spring:</b>	Surface-treated steel
<b>Cushioning screw:</b>	Stainless steel, DIN X 10 CrNiS 18 9

Cylinders are supplied complete with nose mounting and piston rod nuts.

Cylinders with double piston rods are supplied with two piston rod nuts

### Variants Mini ISO:

#### Low-temperature version, type L:

<b>Piston rod seal:</b>	Nitrile rubber, NBR
<b>Piston complete:</b>	Nitrile rubber, NBR/steel

#### High-temperature version, type F:

<b>Piston rod seal:</b>	Fluorocarbon rubber, FPM
<b>Piston complete, Ø10-Ø16:</b>	HNBR/steel
<b>Piston complete, Ø20-Ø25:</b>	FPM/steel

#### PTFE and copper free cylinders, type N:

<b>Piston rod bearing:</b>	PA plastic
----------------------------	------------

#### Cylinders with outer sealings in fluorocarbon, type V:

<b>Piston rod seal/</b>	Fluorocarbon rubber, FPM
<b>Scraper ring:</b>	

**Note:** Spare part = new cylinder

## MINI ISO PNEUMATIC CYLINDERS

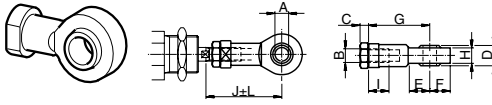
### P1A SERIES - QUICK REFERENCE

Model #	Cylinder		Piston Rod		Thread	Total Weight at 0mm Stroke (lbs)	Additional Weight per 10mm Stroke (lbs)	Air Consumption	Port Size
	Bore (mm)	Area (cm <sup>2</sup> )	Dia. (mm)	Area (cm <sup>2</sup> )					
<b>Double Acting, cushioned stroke</b>									
P1A-S 010 D	10	0.78	4	0.13	M4	0.09	0.007	0.0004 <sup>1)</sup>	M5
P1A-S 012 D	12	1.13	6	0.28	M6	0.15	0.009	0.0005 <sup>1)</sup>	M5
P1A-S 016 D	16	2.01	6	0.28	M6	0.20	0.012	0.0009 <sup>1)</sup>	M5
P1A-S 020 D	20	3.14	8	0.50	M8	0.40	0.015	0.0010 <sup>1)</sup>	G1/8
P1A-S 025 D	25	4.91	10	0.78	M10x1.25	0.89	0.025	0.0023 <sup>1)</sup>	G1/8
<b>Double Acting, adjustable cushioning</b>									
P1A-S 016 M	16	2.01	6	0.28	M6	0.20	0.012	0.0009 <sup>1)</sup>	M5
P1A-S 020 M	20	3.14	8	0.50	M8	0.40	0.015	0.0010 <sup>1)</sup>	G1/8
P1A-S 025 M	25	4.91	10	0.78	M10x1.25	0.89	0.025	0.0023 <sup>1)</sup>	G1/8
<b>Single Acting</b>									
P1A-S 010 SS	10	0.78	4	0.13	M4	0.09	0.007	0.0002 <sup>1)</sup>	M5
P1A-S 012 SS	12	1.13	6	0.28	M6	0.18	0.009	0.0003 <sup>1)</sup>	M5
P1A-S 016 SS(TS)	16	2.01	6	0.28	M6	0.22	0.012	0.0005 <sup>1)</sup>	M5
P1A-S 020 SS(TS)	20	3.14	8	0.50	M8	0.40	0.015	0.0008 <sup>1)</sup>	G1/8
P1A-S 025 SS(TS)	25	4.91	10	0.78	M10x1.25	0.58	0.025	0.0013 <sup>1)</sup>	G1/8

1) Free air consumption per 10 mm stroke length for a double stroke at 87 PSI

CYLINDER MOUNTINGS

P1A SERIES - SWIVEL ROD EYE



According to ISO 8139. Intended for articulated mounting of the cylinder. This mounting is adjustable in the axial direction.

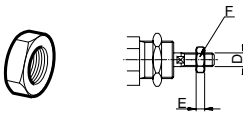
**Material:**  
Swivel rod eye: Galvanized steel  
Ball: hardened steel  
This mounting is also available in stainless steel.

Part No.	Cylinder Ø (mm)	A (mm)	B	C (mm)	D (mm)	E (mm)	F (mm)	G (mm)	H (mm)	I (mm)	J (mm)	K (mm)	L (mm)
P1A-4CRS	10	5	M4	2.2	8	10	9	27	6.0	8	33.0	9	2.0
P1A-4DRS	12-16	6	M6	3.2	9	10	10	30	6.8	9	38.5	11	1.5
P1A-4HRS	20	8	M8	4.0	12	12	12	36	9.0	12	46.0	14	2.0
P1A-4JRS	25	10	M10x1.25	5.0	14	14	14	43	10.5	15	52.5	17	2.5

6

CYLINDER MOUNTINGS

P1A SERIES - ROD NUT



Intended for fixed mounting on the piston rod. Cylinders are supplied complete with one rod nut. (cylinders with double piston rod are supplied with two rod nuts.)

**Material:** Galvanized steel  
This nut is also available in stainless steel.

Part No.	Cylinder Ø (mm)	D (mm)	F (mm)	E (mm)
0261110600	10	M4	7	2.2
0261210800	12-16	M6	10	3.2
0261211000	20	M8	13	4.0
9128985601	25	M10x1.25	17	5.0