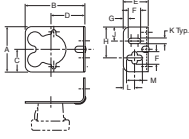
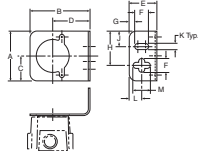


AIR PREPARATION UNITS

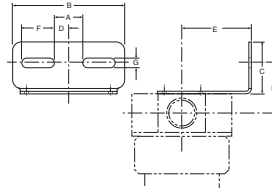
MOUNTING BRACKET KITS



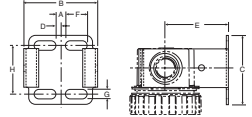
PS417BP
 (Includes Panel Mount Nut)



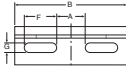
PS419
 (Includes Panel Mount Nut)



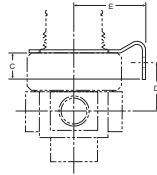
PS743P, PS843P



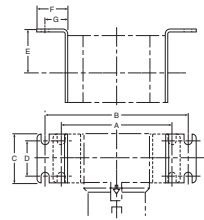
PS943P



PS707P & PS807P
 (Includes Panel Mount Nut)



PS963P
 (Includes Aluminum
 Panel Mount Nut)



P3NKA00MW

DIMENSIONS

Inches												Kit
A	B	C	D	E	F	G	H	J	K	L	M	
1.80	2.37	0.90	1.35	1.00	0.50	0.20	1.24	0.56	0.22	0.45	0.62	PS417BP (10F, 14F, P3A, 14R, 14E)
1.80	2.17	0.90	1.35	1.00	0.50	0.20	1.24	0.56	0.22	0.45	0.62	PS419 (04L)
0.84	3.25	1.50	0.42	2.00	0.94	0.28	1.44	—	—	—	—	PS743P (06F, 11F, 06L, 16L)
1.00	3.94	1.57	0.50	2.19	1.25	0.28	1.68	—	—	—	—	PS843P (07F, 12F, 07L, 17L)
0.28	2.12	2.00	0.14	1.85	0.63	0.28	—	—	—	—	—	PS943P (05F, 15F, 15L)
0.84	2.59	0.49	1.02	1.85	0.61	0.28	—	—	—	—	—	PS963P (05R, 10R, 05E, 27E)
0.84	3.26	0.77	1.46	2.00	0.94	0.28	—	—	—	—	—	PS707P (06R, 06E, 11R)
1.00	3.94	0.65	1.68	2.19	1.25	0.28	—	—	—	—	—	PS807P (07R, 07E, 12R)
6.22	8.19	2.75	1.97	2.36	1.77	1.30	—	—	—	—	—	P3NKA00MW (P3NF, P3NR, P3NE, P3NL)