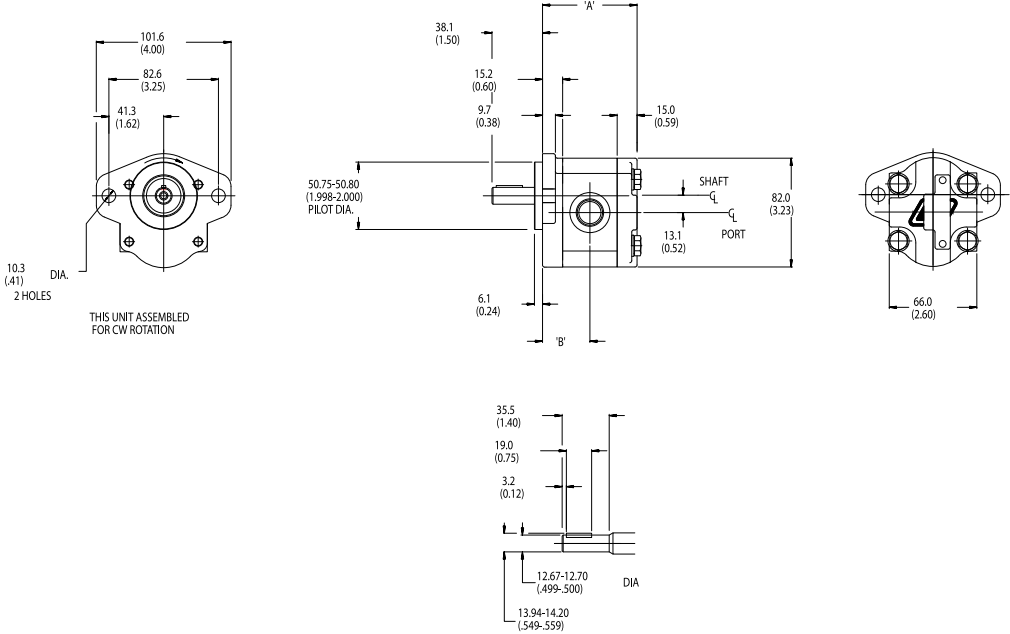


General Description: Displacement: See Code
 Mounting Flange: SAE 'AA' 2-Bolt
 Ports: SAE O-Ring – Side
 Shaft: 1/2" Keyed Shaft
 Seal Material: Nitrile
 Rotation: Clockwise or Counter Clockwise

GEAR PUMPS

PGP505 RAPID RESPONSE



Model Code

- PG Gear Design
 P Pump
 505 Frame
 A Style
 XXXX Displacement
 X Rotation
 J1 Shaft
 H1 Shaft End Cover
 N Seal Material
 D3 Side Inlet
 D2 Side Outlet
 B1 Rear Inlet
 B1 Rear Outlet

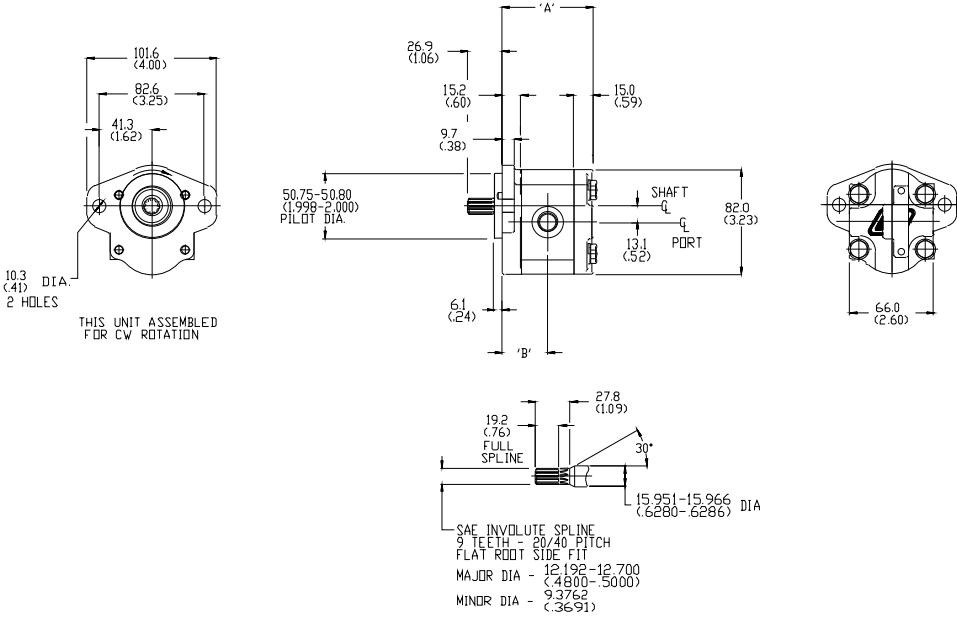
Code	CC	CIR	Inlet Port	Outlet Port	Dim A	Dim B	Order Number	
							Clockwise Code C	Counter Clockwise Code A
0020	2	0.12	3/4"-16 UNF	9/16"-18 UNF	2.70"	1.35"	331-9110-267R	331-9110-275R
0030	3	0.18	3/4"-16 UNF	9/16"-18 UNF	2.81"	1.41"	331-9110-011R	331-9110-096R
0040	4	0.24	3/4"-16 UNF	9/16"-18 UNF	2.91"	1.46"	331-9110-010R	331-9110-097R
0050	5	0.31	3/4"-16 UNF	9/16"-18 UNF	3.02"	1.51"	331-9110-098R	N/A
0060	6	0.37	3/4"-16 UNF	9/16"-18 UNF	3.12"	1.56"	331-9110-101R	331-9110-100R



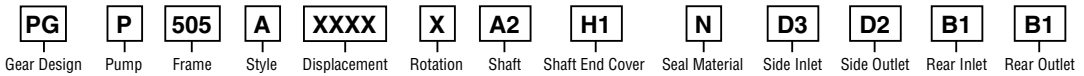
General Description: Displacement: See Code
 Mounting Flange: SAE 'AA' 2-Bolt
 Ports: SAE O-Ring – Side
 Shaft: SAE 'AA' 9-Tooth Splined Shaft
 Seal Material: Nitrile
 Rotation: Clockwise or Counter Clockwise

GEAR PUMPS

PGP505 RAPID RESPONSE



Model Code



Code	CC	CIR	Inlet Port	Outlet Port	Dim A	Dim B	Order Number	
							Clockwise Code C	Counter Clockwise Code A
0020	2	0.12	3/4"-16 UNF	9/16"-18 UNF	2.70"	1.35"	331-9110-264R	331-9110-269R
0030	3	0.18	3/4"-16 UNF	9/16"-18 UNF	2.81"	1.41"	331-9110-265R	331-9110-268R
0040	4	0.24	3/4"-16 UNF	9/16"-18 UNF	2.91"	1.46"	331-9110-266R	331-9110-294R
0050	5	0.31	3/4"-16 UNF	9/16"-18 UNF	3.02"	1.51"	331-9110-262R	331-9110-295R
0060	6	0.37	3/4"-16 UNF	9/16"-18 UNF	3.12"	1.56"	331-9110-263R	331-9110-269R