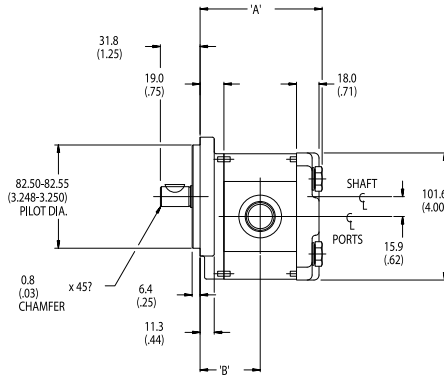
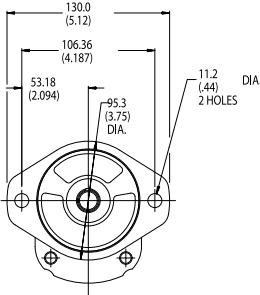
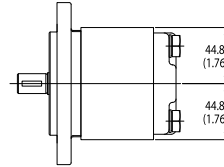
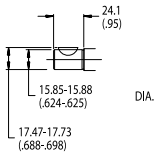


General Description: Displacement: See Code
 Mounting Flange: SAE 'A' 2-Bolt
 Ports: SAE O-Ring – Side
 Shaft: SAE 'A' – 5/8" Keyed Shaft
 Seal Material: Nitrile
 Rotation: Clockwise or Counter Clockwise

GEAR PUMPS

PGP511 RAPID RESPONSE



Model Code

PG
P
511
A
XXXX
X
K1
H2
N
XX
XX
B1
B1

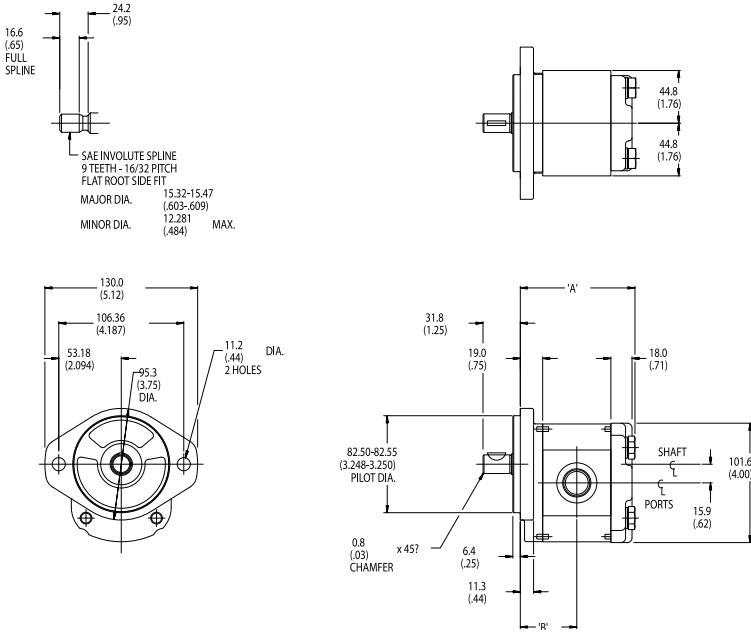
Gear Design Pump Frame Style Displacement Rotation Shaft Shaft End Cover Seal Material Side Inlet Side Outlet Rear Inlet Rear Outlet

Code	CC	CIR	Inlet Port (Code)	Outlet Port (Code)	Dim A	Dim B	Order Number	
							Clockwise Code C	Counter Clockwise Code A
0070	7	0.43	1 1/16"-12 UN (D5)	7/8"-14 UNF (D4)	3.66"	1.80"	334-9111-069R	334-9112-043R
0100	10	0.61	1 1/16"-12 UN (D5)	7/8"-14 UNF (D4)	3.84"	1.89"	334-9111-068R	334-9112-042R
0110	11	0.67	1 1/16"-12 UN (D5)	7/8"-14 UNF (D4)	3.90"	1.92"	334-9111-067R	334-9112-136R
0140	14	0.85	1 5/16"-12 UN (D6)	1 1/16"-12 UN (D5)	4.08"	2.01"	334-9111-048R	334-9112-025R
0180	18	1.10	1 5/16"-12 UN (D6)	1 1/16"-12 UN (D5)	4.32"	2.13"	334-9111-065R	N/A
0210	21	1.28	1 5/16"-12 UN (D6)	1 1/16"-12 UN (D5)	4.58"	2.26"	334-9111-049R	N/A
0280	28	1.71	1 5/16"-12 UN (D6)	1 1/16"-12 UN (D5)	4.88"	2.41"	334-9111-063R	N/A

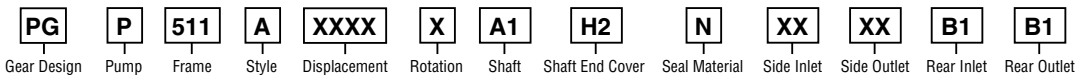
General Description: Displacement: See Code
 Mounting Flange: SAE 'A' 2-Bolt
 Ports: SAE O-Ring – Side
 Shaft: SAE 'A' – 9-Tooth Splined Shaft
 Seal Material: Nitrile
 Rotation: Clockwise or Counter Clockwise

GEAR PUMPS

PGP511 RAPID RESPONSE



Model Code



Code	CC	CIR	Inlet Port (Code)	Outlet Port (Code)	Dim A	Dim B	Order Number	
							Clockwise Code C	Counter Clockwise Code A
0070	7	0.43	1 1/16"-12UN (D5)	7/8"-14 UNF (D4)	3.66"	1.80"	334-9111-062R	334-9112-036R
0100	10	0.61	1 1/16"-12UN (D5)	7/8"-14 UNF (D4)	3.84"	1.89"	334-9111-061R	334-9112-035R
0110	11	0.67	1 1/16"-12UN (D5)	7/8"-14 UNF (D4)	3.90"	1.92"	334-9111-060R	334-9112-268R
0140	14	0.85	1 5/16"-12 UN (D6)	1 1/16"-12 UN (D5)	4.08"	2.01"	334-9111-046R	N/A
0180	18	1.10	1 5/16"-12 UN (D6)	1 1/16"-12 UN (D5)	4.32"	2.13"	334-9111-058R	334-9112-033R
0210	21	1.28	1 5/16"-12 UN (D6)	1 1/16"-12 UN (D5)	4.58"	2.26"	334-9111-057R	334-9112-032R
0280	28	1.71	1 5/16"-12 UN (D6)	1 1/16"-12 UN (D5)	4.88"	2.41"	334-9111-056R	334-9112-031R