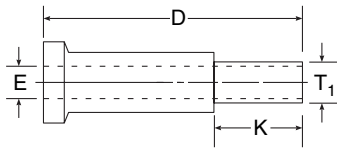


UltraSeal™ GLAND TO MALE TUBE WELD

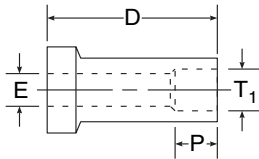
SERIES Q1T3



Part No.	D (in.)	E (in.)	T ₁ (in.)	K (in.)
4-4 Q1T3	1.25	.18	.25	.75
8-6 Q1T3	1.50	.31	.38	.75
8-8 Q1T3	1.50	.41	.50	.75
12-12 Q1T3	1.22	.50	.75	.75

UltraSeal™ GLAND TO WELD-LOK SOCKET

SERIES Q1W

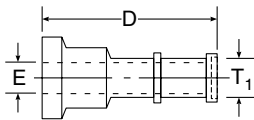


Part No.	T ₁ Tube OD	D (in.)	P (in.)	*E Bore (in.)	Working Pressure
4-2 Q1W	1/8	1	.16	.09	10,000
4-4 Q1W	1/4	1	.25	.18	7,700
6-4 Q1W	1/4	1	.28	.18	10,000
6-6 Q1W	3/8	1	.31	.25	5,000
8-4 Q1W	1/4	1	.25	.18	10,000
8-6Q1W	3/8	1	.34	.31	9,500
8-8Q1W	1/2	1	.41	.38	4,300
12-12Q1W	3/4	1.50	.50	.50	4,600

* Note: Machined Bore diameters to match machined Bore in body.

UltraSeal™ GLAND TO AUTOMATIC BUTTWELD

SERIES Q1Y



Part No.	T (in.)	D (in.)	*E Bore (in.)	**Auto Buttweld Wall Size	Working Pressure
4-4Q1Y	1/4	1.13	.18	.035	7,700
6-4 Q1Y	1/4	1.19	.18	.035	7,700
6-6 Q1Y	3/8	1.19	.31	.035	4,900
8-4 Q1Y	1/4	1.19	.18	.035	7,700
8-6 Q1Y	3/8	1.19	.31	.035	4,900
8-8 Q1Y	1/2	1.34	.41	.049	5,000
12-12 Q1Y	3/4	1.50	.50	.065	3,900

* Note: Machined Bore diameters to match machined Bore in body.