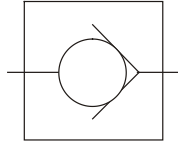


General Description: Series C check valves permit free flow in one direction, and dependable shut-off in the reverse direction.

CHECK VALVES

SERIES C



Part No.	Description	Size	Material	Press. Rating (PSI)	Flow (GPM)	Weight (lbs.)
C200S	Check Valve	1/8" NPT	Steel	5000	3	0.100
C400S	Check Valve	1/4" NPT	Steel	5000	5	0.400
C600S	Check Valve	3/8" NPT	Steel	5000	8	0.500
C620S	Check Valve	#6 SAE	Steel	5000	5	0.500
C800S	Check Valve	1/2" NPT	Steel	5000	15	1.300
C820S	Check Valve	#8 SAE	Steel	5000	8	0.700
C1020S	Check Valve	#10 SAE	Steel	5000	15	1.300
C1200S	Check Valve	3/4" NPT	Steel	5000	25	2.000
C1220S	Check Valve	#12 SAE	Steel	5000	25	2.000
C1600S	Check Valve	1" NPT	Steel	3000	40	3.300
C1620S	Check Valve	#16 SAE	Steel	3000	40	3.300
C2000S	Check Valve	1 1/4" NPT	Steel	3000	70	6.200
C2020S	Check Valve	#20 SAE	Steel	3000	70	6.200
C2400S	Check Valve	1 1/2" NPT	Steel	3000	100	8.400
C2420S	Check Valve	#24 SAE	Steel	3000	100	8.400
C3200S	Check Valve	2" NPT	Steel	3000	150	15.400
C3220S	Check Valve	#32 SAE	Steel	3000	150	15.400
C200B	Check Valve	1/8" NPT	Brass	2000	3	0.100
C400B	Check Valve	1/4" NPT	Brass	2000	5	0.400
C600B	Check Valve	3/8" NPT	Brass	2000	8	0.500
C800B	Check Valve	1/2" NPT	Brass	2000	15	1.300
C1200B	Check Valve	3/4" NPT	Brass	2000	25	2.000
C1600B	Check Valve	1" NPT	Brass	500	40	3.300