

General Description: The Series CM Manapak check valves provide an integral, full flow check valve in the pressure 'P' port, 'A' port, 'B' port, or the tank 'T' port of the directional valve. Reverse flow is blocked. The CM2 and CM3 sizes offer a combination P&T check version.

Features:

- Valve bodies are manufactured from steel which provides extra strength and durability for longer life. Internal hardened steel components also provide longer life.
- Positive shut-off is provided by a fully guided poppet and allows full flow in the unchecked position.
- Parker Manapak CM sandwich style check valves can be used either on the 'P', 'A', 'B', 'T' ports or combinations.
- Large internal flow paths allow high flow at low pressure drop.

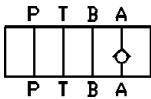
MANAPAK SANDWICH VALVES

SERIES CM

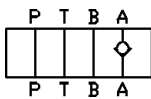


Part No.	Description	Size	Material	Press. Rating (PSI)	Flow (GPM)	Weight (lbs.)
CM2AAN	A Port Check - free flow from load	NFPA D03, CETOP 3, NG 6	Steel	5000	20	1.7
CM2BBN	B Port Check - free flow from load	NFPA D03, CETOP 3, NG 6	Steel	5000	20	1.7
CM2PPN	P Port Check - free flow to load	NFPA D03, CETOP 3, NG 6	Steel	5000	20	1.7
CM2TTN	T Port Check - free flow from load	NFPA D03, CETOP 3, NG 6	Steel	5000	20	1.7
CM3AAN	A Port Check - free flow from load	NFPA D05, CETOP 5, NG 10	Steel	5000	30	3.9
CM3BBN	B Port Check - free flow from load	NFPA D05, CETOP 5, NG 10	Steel	5000	30	3.9
CM3PPN	P Port Check - free flow to load	NFPA D05, CETOP 5, NG 10	Steel	5000	30	3.9
CM3TTN	T Port Check - free flow from load	NFPA D05, CETOP 5, NG 10	Steel	5000	30	3.9

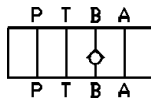
Schematics



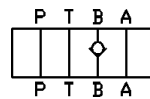
AA Option



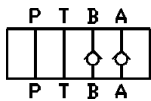
AAF Option



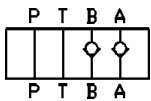
BB Option



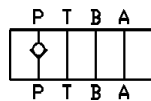
BBF Option



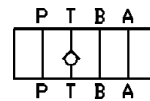
DD Option



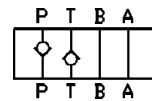
DDF Option



PP Option



TT Option



PT Option