

General Description: The D3W series directional control valves are high-performance, 4-chamber, direct operated, wet armature, solenoid controlled, 3 or 4-way valves. They are available in 2 or 3-position and conform to NFPA's D05/CETOP 5 mounting patterns.

DIRECTIONAL CONTROL VALVES

SERIES D3W



Part No.	Description	Hydraulic Interface	Electrical Interface	Function	Center Condition	Coil Volts	In-rush (Amps)	Holding (Amps)	Max Pressure P,A,B ports (PSI)	Max Pressure T port (PSI)	Max Flow at 3000 PSI (GPM)	Max Flow at 5000 PSI (GPM)
D3W2ENYC5	Directional control valve	D05	conduit box	3 Pos-4 Way	Open	110-120 AC	3.2	0.86	5000	1500	30	30
D3W1CNYC5	Directional control valve	D05	conduit box	3 Pos-4 Way	Closed	110-120 AC	3.2	0.86	5000	1500	28	5
D3W4CNYC5	Directional control valve	D05	conduit box	3 Pos-4 Way	Motor	110-120 AC	3.2	0.86	5000	1500	17	5
D3W9CNYC5	Directional control valve	D05	conduit box	3 Pos-4 Way	Tandem	110-120 AC	3.2	0.86	5000	1500	12	-

SERIES D3W Quick Reference Data

Model	Spool Symbol	Maximum Flow, L/M (GPM) 350 Bar (5000 PSI) w/o Malfunction		Model	Spool Symbol	Maximum Flow, L/M (GPM) 350 Bar (5000 PSI) w/o Malfunction	
		D3W	D3W*F ¹			D3W	D3W*F ¹
D3*1		150 (40)	78 (20)	D3*8		50 ² (13)	59 ³ (15)
D3*2		150 (40)	78 (20)	D3*9		39 (10)	59 ³ (15)
D3*4		150 (40)	59 (15)				

Center or De-energized position is indicated by A, B, P & T port notation.
¹3000 PSI Max. ²4300 PSI Max. ³1500 PSI Max.

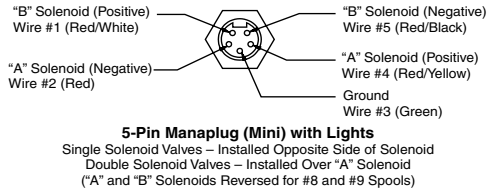
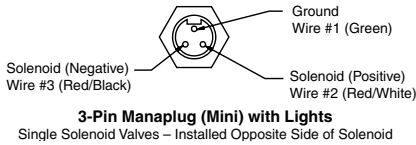
SERIES D3W ACCESSORIES

Conduit Box
 (connection option K)

- Interface – 152.4 cm (6.0 inch) lead wires, 18 awg.
- Meets NEMA 4 and IP67

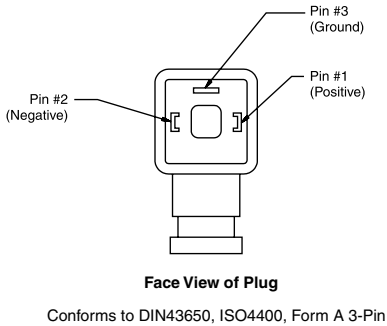
Manaplug
 (valve variations 6, 56, 1A, 1C)

- Interface – Brad Harrison Plug
- 3-Pin for Single Solenoid
- 5-Pin for Double Solenoid

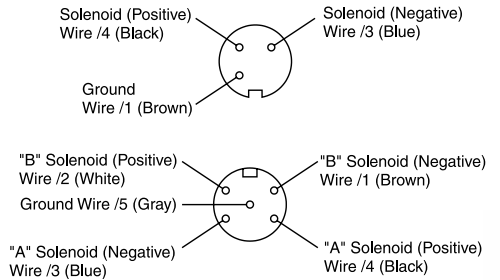


Pins are as seen on valve (male pin connectors).

Hirschmann Plug with Lights (P5)



Manaplug - Micro Connector
 (valve variations 7, 57, 1B, 1D)

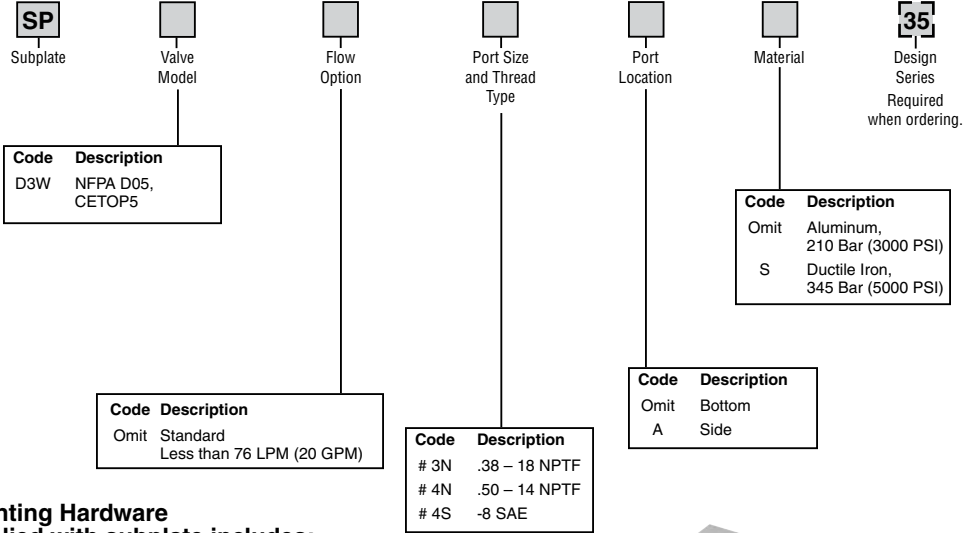


Pins are as seen on valve (male pin connectors).

DIRECTIONAL CONTROL VALVES

HOW TO ORDER

Series D3W Subplates

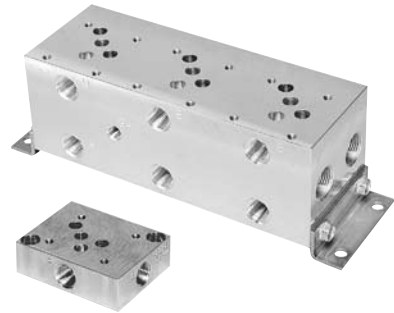


Mounting Hardware supplied with subplate includes:

Subplates	Mounting Hardware	Qty.
SPD33N**	.38-16 UNC x 1.25 LG. SHCS	2
SPD34N**	.38-16 UNC x 1.25 LG. SHCS	2
SPD34S**	.38-16 UNC x 1.25 LG. SHCS	2
SPD31*6N**	.38-16 UNC x 1.75 LG. SHCS	2
SPD31*6S**	.38-16 UNC x 1.75 LG. SHCS	2
SPD3H6N**	.38-16 UNC x 1.75 LG. SHCS	2
SPD3H6S**	.38-16 UNC x 1.75 LG. SHCS	2

Valve mounting threads:
0.25-20 UNC x 0.75 DP.
Used for SAE and NPTF ports.

Note: 35 Design Series subplates conform to NFPA mounting pattern specifications, but may be dimensionally different from previous design series.



Series D3W Subplates and Accessories

Part No.	Description	Hydraulic Interface
SPD34SS35	SUBPLATE - bottom ports - 3/4"-16 SAE	D05
SPD34NS35	SUBPLATE - bottom ports - 1/2" NPT	D05
SPD34SAS35	SUBPLATE - side ports - 3/4"-16 SAE	D05
BK98	Bolt Kit for CETOP-5 Valves	

Mounting Bolt Kits

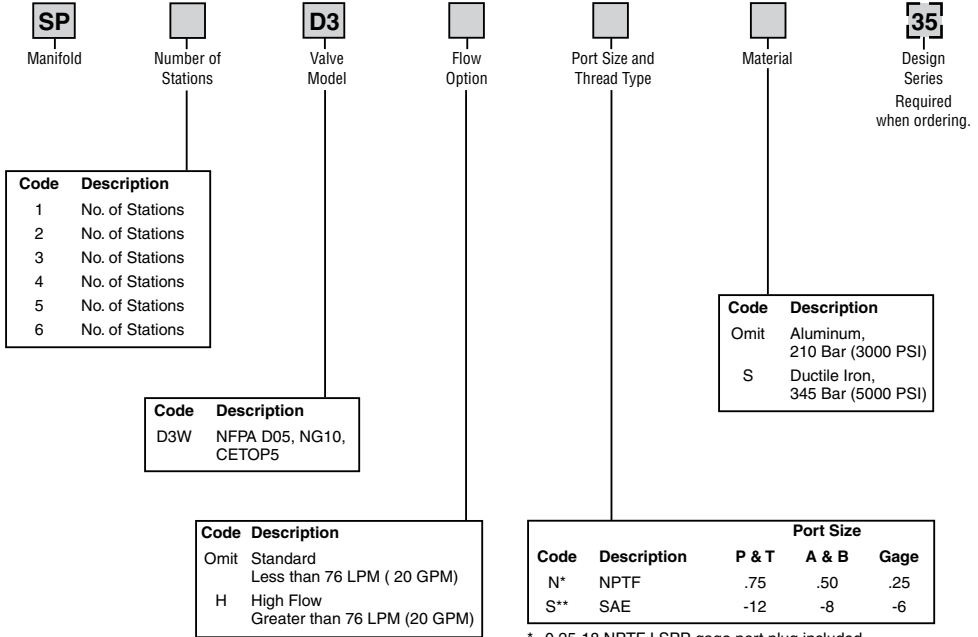
UNC Bolt Kits for use with D3W Directional Control Valves & Manapaks/Cartpaks					
		Number of Manapaks/Cartpaks @ 2.00" (50mm) thickness			
		0	1	2	3
D3-30		BK98 1.625"	BK141 3.50"	BK142 5.50"	BK143 7.50"
D3-30 Plus Tapping Plate		BK166 2.50"	BK167 4.50"	BK168 6.50"	BK169 8.50"

Note: All bolts are SAE grade 8, 1/4-20 UNC-2A thread, torque to 16 N.m. (12 f6.-lbs.)

DIRECTIONAL CONTROL VALVES

HOW TO ORDER

Series D3W Manifolds



* 0.25-18 NPTF LSPP gage port plug included.
 ** -6 SAE gage port plug included.

Mounting hardware supplied with manifold includes:
 (2) steel brackets
 For SAE and NPTF ports:
 (8) 5/16-18 UNC x .63 hex washer cap screws

Valve mounting threads:
 0.25-20 UNC x 0.75 DP.
 Used for SAE and NPTF ports.

Mounting Bolt Kits

UNC Bolt Kits for use with D3W Directional Control Valves & Manapaks/Cartpaks				
	Number of Manapaks/Cartpaks @ 2.00" (50mm) thickness			
	0	1	2	3
D3-30	BK98 1.625"	BK141 3.50"	BK142 5.50"	BK143 7.50"
D3-30 Plus Tapping Plate	BK166 2.50"	BK167 4.50"	BK168 6.50"	BK169 8.50"

Note: All bolts are SAE grade 8, 1/4-20 UNC-2A thread, torque to 16 N.m. (12 f6.-lbs.)

Note: 35 Design Series manifolds conform to NFPA mounting pattern specifications, but may be dimensionally different from previous design series.

No. Stations	01	02	03	04	05	06
Wgt., Alum, kg (lbs.)	1.8 (4)	3.7 (8)	5.0 (11)	6.4 (14)	7.8 (17)	9.6 (21)
Wgt., Iron, kg (lbs.)	4.1 (9)	7.8 (17)	11.9 (26)	15.6 (34)	19.7 (43)	23.3 (51)