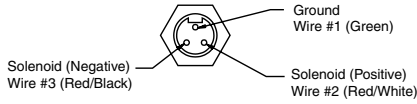


SERIES D1VW ACCESSORIES

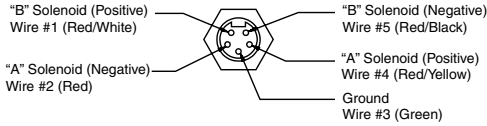
Manaplug (Options 6, 56, 1A & 1C)

- Interface – Brad Harrison Plug
– 3-Pin for Single Solenoid
– 5-Pin for Double Solenoid



3-Pin Manaplug (Mini) with Lights

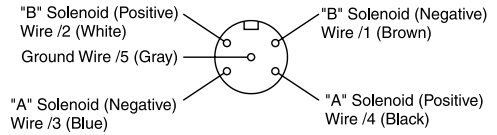
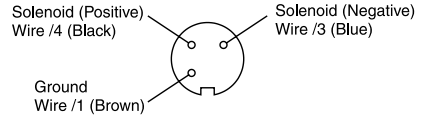
Single Solenoid Valves – Installed Opposite Side of Solenoid



5-Pin Manaplug (Mini) with Lights

Single Solenoid Valves – Installed Opposite Side of Solenoid
Double Solenoid Valves – Installed Over "A" Solenoid
("A" and "B" Solenoids Reversed for #8 and #9 Spools)

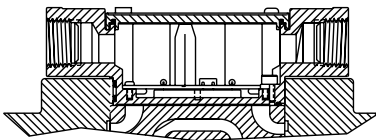
Micro Connector Options (7A, 7B, 1B & 1D)



Pins are as seen on valve (male pin connectors).

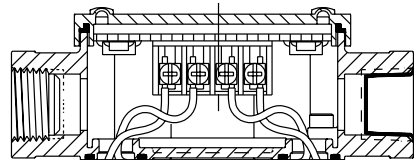
Conduit Box (Standard/Plug-In; Option G)

Meets Nema 4/IP67



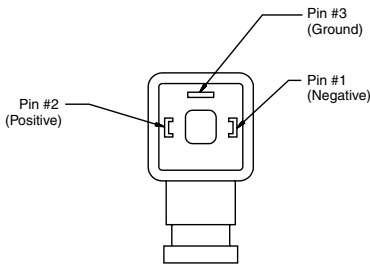
Signal Lights (Option 5)

– LED Interface



Hirschmann Plug with Lights (Option P5)

ISO 4400/DIN 43650 Form "A"

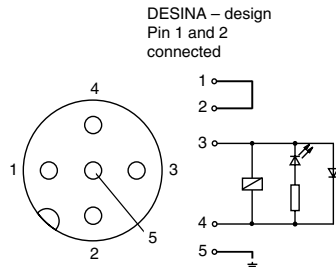


Face View of Plug

DESINA Connector (Option D)

M12 pin assignment
Standard

- 1 = Not used
- 2 = Not used
- 3 = 0V
- 4 = Signal (24 V)
- 5 = Earth Ground



DESINA – design
Pin 1 and 2
connected

Pins are as seen on valve (male pin connectors).