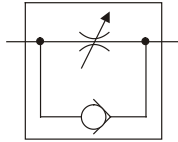


General Description: Series F flow control valves provide precise control of flow and shut-off in one direction, and automatically permit full flow in the opposite direction.

FLOW CONTROL VALVES

SERIES F



Part No.	Description	Size	Material	Press. Rating (PSI)	Flow (GPM)	Weight (lbs.)
F200S	Flow Control Valve	1/8" NPT	Steel	5000	3	0.300
F400S	Flow Control Valve	1/4" NPT	Steel	5000	5	0.500
F420S	Flow Control Valve	#4 SAE	Steel	5000	3	0.500
F600S	Flow Control Valve	3/8" NPT	Steel	5000	8	0.700
F620S	Flow Control Valve	#6 SAE	Steel	5000	5	0.600
F800S	Flow Control Valve	1/2" NPT	Steel	5000	15	1.500
F820S	Flow Control Valve	#8 SAE	Steel	5000	8	1.000
F1020S	Flow Control Valve	#10 SAE	Steel	5000	15	1.800
F1200S	Flow Control Valve	3/4" NPT	Steel	3000	25	2.600
F1220S	Flow Control Valve	#12 SAE	Steel	3000	25	2.600
F1600S	Flow Control Valve	1" NPT	Steel	3000	40	5.100
F1620S	Flow Control Valve	#16 SAE	Steel	3000	40	5.100
F2000S	Flow Control Valve	1 1/4" NPT	Steel	3000	70	8.100
F2020S	Flow Control Valve	#20 SAE	Steel	3000	70	8.100
F2400S	Flow Control Valve	1 1/2" NPT	Steel	3000	100	10.200
F2420S	Flow Control Valve	#24 SAE	Steel	3000	100	10.200
F3200S	Flow Control Valve	2" NPT	Steel	3000	150	17.400
F3220S	Flow Control Valve	#32 SAE	Steel	3000	150	17.400
F200B	Flow Control Valve	1/8" NPT	Brass	2000	3	0.300
F400B	Flow Control Valve	1/4" NPT	Brass	2000	5	0.500
F600B	Flow Control Valve	3/8" NPT	Brass	2000	8	0.700
F800B	Flow Control Valve	1/2" NPT	Brass	2000	15	1.500
F1200B	Flow Control Valve	3/4" NPT	Brass	2000	25	2.600
F1600B	Flow Control Valve	1" NPT	Brass	500	40	5.100