

General Description: The FM double Manapak flow control valves permit free flow from the directional valve to the actuator and adjustable independent flow regulation in each return line from the actuator (meter-out). The FM2 and FM3 have a seal plate and can be inverted for meter-in applications.

Features:

- Manapak style FM flow control valves can be provided in either single or double configurations.
- The flow controls may be positioned in 'A' port, 'B' port, both 'A' and 'B' ports or 'P' port.
- Valve bodies are manufactured from steel providing extra strength and durability for longer life. Internal hardened steel components also provide longer life.
- Two step needles provide fine adjustment for the first few turns and coarse adjustment for the last few turns. Standard and fine adjustment needles available.
- Large bypass checks allow high flow at a low pressure drop.
- Valve is reversible (invert 180°) for meter-in or meter-out applications (FM2 and FM3 only).
- Adjustment options include Allen hex or hand knob.

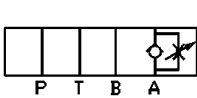
MANAPAK SANDWICH VALVES

SERIES FM

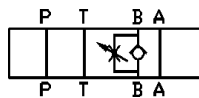


| Part No. | Description | Size | Material | Press. Rating (PSI) | Flow (GPM) | Weight (lbs.) |
|----------|-------------------------|--------------------------|----------|---------------------|------------|---------------|
| FM2AAKN | A Port Flow Control | NFPA D03, CETOP 3, NG 6 | Steel | 5000 | 20 | 3.8 |
| FM2BBKN | B Port Flow Control | NFPA D03, CETOP 3, NG 6 | Steel | 5000 | 20 | 3.8 |
| FM2DDKN | A & B Port Flow Control | NFPA D03, CETOP 3, NG 6 | Steel | 5000 | 20 | 3.8 |
| FM2PPKN | P Port Flow Control | NFPA D03, CETOP 3, NG 6 | Steel | 5000 | 20 | 3.8 |
| FM3AAKN | A Port Flow Control | NFPA D05, CETOP 5, NG 10 | Steel | 5000 | 30 | 5.2 |
| FM3BBKN | B Port Flow Control | NFPA D05, CETOP 5, NG 10 | Steel | 5000 | 30 | 5.2 |
| FM3DDKN | A & B Port Flow Control | NFPA D05, CETOP 5, NG 10 | Steel | 5000 | 30 | 5.2 |
| FM3PPKN | P Port Flow Control | NFPA D05, CETOP 5, NG 10 | Steel | 5000 | 30 | 5.2 |

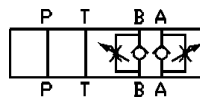
Schematics



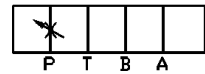
AA Option



BB Option



DD Option



PP Option