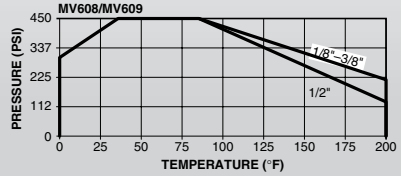
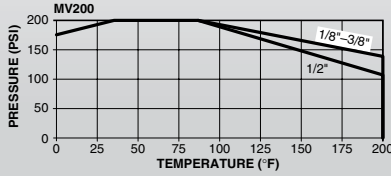


Applications: The Parker Mini-Valve is to be used in confined and hard to reach applications. The brass extruded body allows for extended service life and is chrome plated as standard.

- Features:**
- MV608/609 valves include blowout proof stem, hard plate chrome ball, PTFE seats, Viton stem seals and standard yellow handle.
 - MV200 valve features a black lever handle.

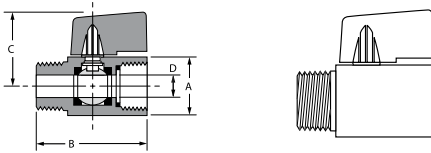
Working Pressure and Temperature Range:

These valves are designed and built for use at pressures and temperatures within the stated ranges. Consult the factory for any use outside of these ranges.



MINI BALL VALVES SERIES 608/609

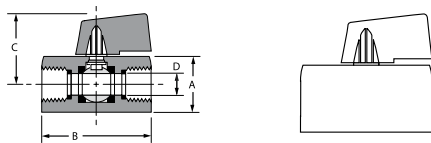
MALE-FEMALE PIPE ENDS, COMPACT HANDLE, MINI BALL VALVE MV608



| Part No. | Pipe Thread | A Hex | B | C | Flow Dia. D |
|----------|-------------|-------|------|------|-------------|
| MV608-2 | 1/8 | .83 | 1.72 | 1.12 | .240 |
| MV608-4 | 1/4 | .83 | 1.72 | 1.12 | .300 |
| MV608-6 | 3/8 | .83 | 1.72 | 1.12 | .315 |
| MV608-8 | 1/2 | .98 | 2.11 | 1.20 | .380 |

MINI BALL VALVES SERIES 200/608/609

FEMALE PIPE ENDS, COMPACT HANDLE, MINI BALL VALVE MV609



| Part No. | Pipe Thread | A Hex | B | C | Flow Dia. D |
|----------|-------------|-------|------|------|-------------|
| MV609-2 | 1/8 | .83 | 1.72 | 1.12 | .240 |
| MV609-4 | 1/4 | .83 | 1.72 | 1.12 | .300 |
| MV609-6 | 3/8 | .83 | 1.72 | 1.12 | .300 |
| MV609-8 | 1/2 | .98 | 2.11 | 1.20 | .380 |