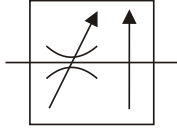


**General Description:** Series PCM and PCCM pressure compensated flow control valves are designed to regulate flow at a selected rate, within 5%, regardless of fluctuations in inlet and outlet pressure.

**PRESSURE COMPENSATED VALVES**

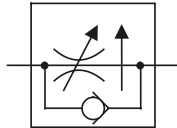
**SERIES PCM**



Part No.	Description	Size	Material	Press. Rating (PSI)	Flow (GPM)	Weight (lbs.)
PCM400S	Press. Comp. Flow Control	1/4" NPT	Steel	3000	3	1.800
PCM600S	Press. Comp. Flow Control	3/8" NPT	Steel	3000	6	2.300
PCM620S	Press. Comp. Flow Control	#6 SAE	Steel	3000	3	1.800
PCM800S	Press. Comp. Flow Control	1/2" NPT	Steel	3000	15	3.700
PCM820S	Press. Comp. Flow Control	#8 SAE	Steel	3000	6	3.100
PCM1200S	Press. Comp. Flow Control	3/4" NPT	Steel	3000	25	8.000
PCM1220S	Press. Comp. Flow Control	#12 SAE	Steel	3000	25	8.000
PCM1600S	Press. Comp. Flow Control	1" NPT	Steel	3000	50	14.500

**PRESSURE COMPENSATED VALVES**

**SERIES PCCM**



Part No.	Description	Size	Material	Press. Rating (PSI)	Flow (GPM)	Weight (lbs.)
PCCM400S	Press. Comp. Flow Control	1/4" NPT	Steel	3000	3	1.800
PCCM600S	Press. Comp. Flow Control	3/8" NPT	Steel	3000	6	2.300
PCCM620S	Press. Comp. Flow Control	#6 SAE	Steel	3000	3	1.800
PCCM800S	Press. Comp. Flow Control	1/2" NPT	Steel	3000	15	3.700
PCCM820S	Press. Comp. Flow Control	#8 SAE	Steel	3000	6	3.100
PCCM1200S	Press. Comp. Flow Control	3/4" NPT	Steel	3000	25	8.000
PCCM1220S	Press. Comp. Flow Control	#12 SAE	Steel	3000	25	8.000
PCCM1600S	Press. Comp. Flow Control	1" NPT	Steel	3000	50	14.500