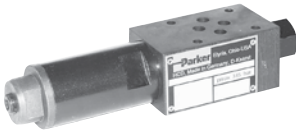


**General Description:** Series PRDM are direct operated pressure reducing valves that are used to regulate pressure in one area of a hydraulic circuit at a predetermined level below normal system pressure. Additionally, an integral pressure relieving function for the secondary reduced pressure circuit is incorporated into the design.

- Features:**
- PRDM Manapak sandwich valves may be selected to reduce pressure in the 'P' port, 'A' port or 'B' port.
  - The direct operated, cushioned piston design results in fast response, low leakage and minimal hysteresis.
  - Up to four pressure adjustment ranges are available with maximum pressure settings of 25, 64, 160 and 210 Bar (363, 928, 2320, 3045 PSI).
  - Adjustment options include: internal hex screw, hand knob or internal hex with keylock.
  - Fluorocarbon seals are standard for multi-fluid compatibility.
  - Available gage port connections include: SAE, NPT, BSPP Metric and ISO 6149.

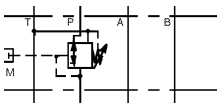
## MANAPAK SANDWICH VALVES

### SERIES PRDM

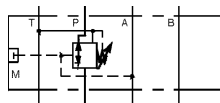


Part No.	Description	Size	Material	Press. Rating (PSI)	Flow (GPM)	Weight (lbs.)
PRDM2PP35KN	P Port Pressure Reducing Valve	NFPA D03, CETOP 3, NG 6	Steel	5000	10.5	2.9
PRDM2AA35KN	A Port Pressure Reducing Valve	NFPA D03, CETOP 3, NG 6	Steel	5000	10.5	2.9
PRDM2BB35KN	B Port Pressure Reducing Valve	NFPA D03, CETOP 3, NG 6	Steel	5000	10.5	2.9
PRDM3PP35KN	P Port Pressure Reducing Valve	NFPA D05, CETOP 5, NG 10	Steel	5000	21	5.8
PRDM3AA35KN	A Port Pressure Reducing Valve	NFPA D05, CETOP 5, NG 10	Steel	5000	21	5.8
PRDM3BB35KN	B Port Pressure Reducing Valve	NFPA D05, CETOP 5, NG 10	Steel	5000	21	5.8

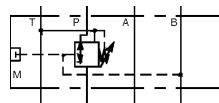
### Schematics



PP Option



AA Option



BB Option