

General Description: RM Series relief valves limit system pressure by opening to tank when system pressure reaches the valve setting. With D03 size, they can also be configured to limit the 'A' or 'B' work port pressures independently.

Features:

- Parker Manapak RM sandwich style relief valves can be used to limit pressure in the 'P' port, 'A' port, or 'B' port.
- Valve bodies are manufactured from steel which provides extra strength and durability for longer life. Internal hardened steel components also provide longer life.
- Three pressure adjustment options are available: slotted screw, knob and locking knob.

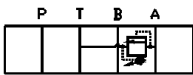
MANAPAK SANDWICH VALVES

SERIES RM

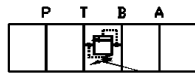


Part No.	Description	Size	Material	Press. Rating (PSI)	Flow (GPM)	Weight (lbs.)
RM2PT35SN	P -> T Relief Valve	NFPA D03, CETOP 3, NG 6	Steel	5000 PSI	14	2.1
RM2AT35SN	A -> T Relief Valve	NFPA D03, CETOP 3, NG 6	Steel	5000 PSI	14	2.1
RM2BT35SN	B -> T Relief Valve	NFPA D03, CETOP 3, NG 6	Steel	5000 PSI	14	2.1
RM3PT35SN	P -> T Relief Valve	NFPA D05, CETOP 5, NG 10	Steel	5000 PSI	20	6.6
RM3AT35SN	A -> T Relief Valve	NFPA D05, CETOP 5, NG 10	Steel	5000 PSI	20	6.6
RM3BT35SN	B -> T Relief Valve	NFPA D05, CETOP 5, NG 10	Steel	5000 PSI	20	6.6

Schematics



AT Option



SUBPLATE SIDE

BT Option



PT Option