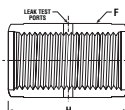
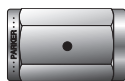
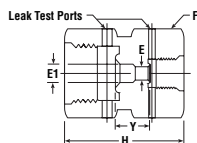


**COUPLING**



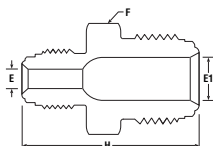
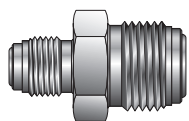
Size	Part No.	F Hex Flat	H (in.)
1/8	2 VHC-SS	7/16	0.66
1/4	4 VHC-SS	3/4	1.19
1/2	8 VHC-SS	1 1/16	1.31
3/4	12 VHC-SS	1 1/2	1.68
1	16 VHC-SS	1 3/4	2.04

**DOUBLE FEMALE REDUCING UNION**



Size	Part No.	E (in.)	E1 (in.)	F Hex Flat	H (in.)	Y (in.)	Working Pressure psig
1/4x1/8	4-2 HV7-SS	0.13	.25	3/4	1.16	0.36	8000
1/2x1/4	8-4 HV7-SS	0.25	.41	1 1/16	1.41	0.35	3500

**DOUBLE MALE REDUCING UNION**



Size	Part No.	E (in.)	E1 (in.)	F Hex Flat	H (in.)	Working Pressure psig
1/4x1/8	4-2 HV-SS	0.09	0.18	5/8	1.37	8000
1/2x1/4	8-4 HV-SS	0.18	0.41	15/16	1.71	3500