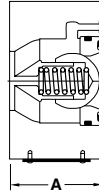
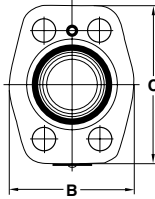


**General Description:** The C5V flange mounted check valves are ideal for pump outlet ports, cylinder ports, manifolds, or any 3/4" to 1 1/2" Code 61 4-bolt flange port. These valves provide a compact, leak-free solution for any hydraulic circuit.

**HYDRAULIC PUMP**

**CHECK VALVES - FLANGE MOUNTED**



Series	A (in.)	B (in.)	C (in.)
C5V06	1.78	1.89	2.52
C5V08	1.78	2.36	2.91
C5V10	1.97	2.68	3.35
C5V12	1.97	3.15	4.09

Part No.	Model No.	Size	Max. Pressure	Rated Flow	Cracking Pressure $\Delta P$	$\Delta P$ at rated flow	Seal Compound
026-75883-0	C5V06 311 B1 025	3/4"	5075 psi	26.5 gpm	14.5 psi	25 psi	Buna-N
026-75884-0	C5V08 310 B1 025	1"	5075 psi	52.5 gpm	7 psi	24 psi	Buna-N
026-75885-0	C5V10 310 B1 025	1 1/4"	4060 psi	105.5 gpm	7 psi	43 psi	Buna-N
026-75886-0	C5V12 310 B1 025	1 1/2"	3045 psi	198 gpm	7 psi	150 psi	Buna-N