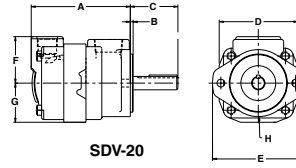
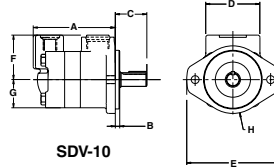
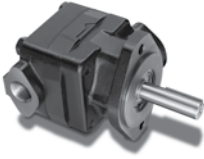


General Description: The SDV series are a fixed displacement vane pump ideal for low to mid pressure applications. Their compact design and low noise features make them well suited for compactors, test stands and remote pilot pumps.

HYDRAULIC PUMP

SDV VANE PUMP



| Ring Size | A* (in.) | B (in.) | C Max (in.) | D | ØE (in.) | F (in.) | G (in.) | ØH (in.) |
|-----------|--------------|---------|-------------|-------|----------|---------|---------|----------|
| SDV-10 | 4.55 to 5.00 | 0.250 | 1.750 | 3.000 | 5.120 | 2.470 | 1.500 | 3.750 |
| SDV-20 | 4.93 to 5.52 | 0.173 | 2.660 | 4.380 | 5.120 | 2.600 | 2.190 | 3.750 |

| Part No. | Model No. | Displacement | GPM @ 1800 RPM | Max Pressure | Mounting | Shaft | Port Size | Max. RPM | Seal Compound | Rotation |
|---------------|---------------|--------------|----------------|--------------|--|---------------------------|--|----------|---------------|-----------------------------------|
| SDV-10410-1/A | SDV10 1P4P 1A | 13.1cc | 6.2 | 2250 psi | 2 bolt flange - 3.25" pilot diameter (SAE-A) | Straight Keyed (.75" dia) | Inlet: 1" NPTF Outlet: 1/2" NPTF | 3000 | Buna-N | Clockwise (viewed from shaft end) |
| SDV-10410-2/A | SDV10 1S4S 1A | 13.1cc | 6.2 | 2250 psi | 2 bolt flange - 3.25" pilot diameter (SAE-A) | Straight Keyed (.75" dia) | Inlet: 1" 5/16-12 UNF-2B Outlet: 3/4"-16 UNF-2B | 3000 | Buna-N | Clockwise (viewed from shaft end) |
| SDV-10610-1/A | SDV10 1P6P 1A | 19.5cc | 9.3 | 2000 psi | 2 bolt flange - 3.25" pilot diameter (SAE-A) | Straight Keyed (.75" dia) | Inlet: 1" NPTF Outlet: 1/2" NPTF | 2100 | Buna-N | Clockwise (viewed from shaft end) |
| SDV-10610-2/A | SDV10 1S6S 1A | 19.5cc | 9.3 | 2000 psi | 2 bolt flange - 3.25" pilot diameter (SAE-A) | Straight Keyed (.75" dia) | Inlet: 1" 5/16-12 UNF-2B Outlet: 3/4"-16 UNF-2B | 2100 | Buna-N | Clockwise (viewed from shaft end) |
| SDV-20310-1/A | SDV20 1P8P 1A | 26.5 cc | 12.6 | 2250 psi | 2 bolt flange - 3.25" pilot diameter (SAE-A) | Straight Keyed (.75" dia) | Inlet: 1" 1/4 NPTF Outlet: 3/4" NPTF | 2400 | Buna-N | Clockwise (viewed from shaft end) |
| SDV-20310-2/A | SDV20 1S8S 1A | 26.5 cc | 12.6 | 2250 psi | 2 bolt flange - 3.25" pilot diameter (SAE-A) | Straight Keyed (.75" dia) | Inlet: 1" 5/8-12 UNF-2B Outlet: 1" 1/16-12 UNF-2B | 2400 | Buna-N | Clockwise (viewed from shaft end) |